

## Happy Cart Slim



Hot only and Manual drive mode.

For nursing hospitals and small-and-medium-sized hospitals.

- Light and compact design.
- Superior temperature control.
- Customization is available for user's needs.

Colour options: Ebony black/ Medium blue/ Silver/ Transparent

Happy Cart Slim is light and compact for nursing hospitals and small-and-medium-sized hospitals.

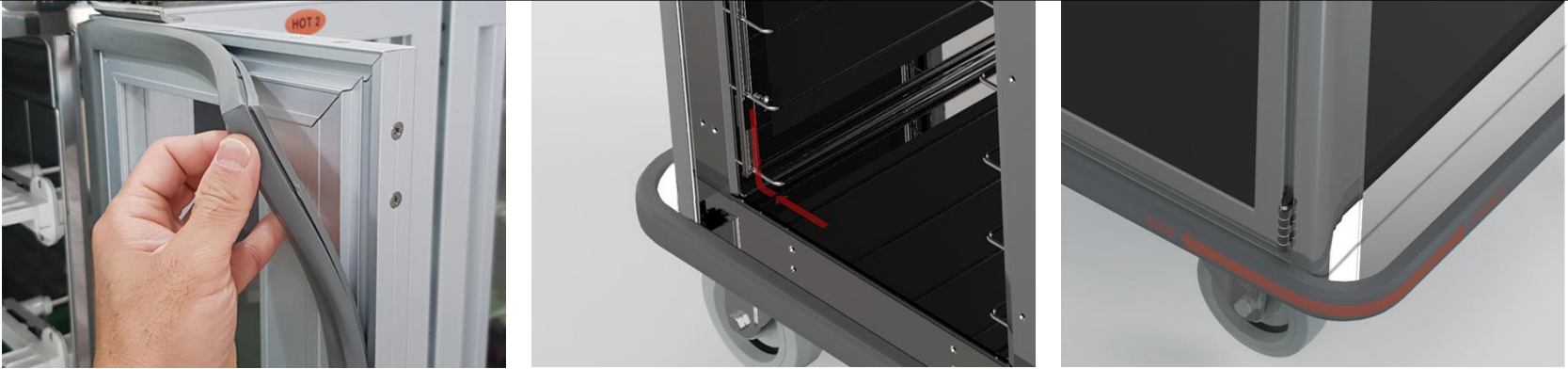


- Optimized temperature control: Enhancing insulation and minimizing heat loss.
- Efficient space arrangement: Double-door structure and pass-type holder improve convenience of tray loading process and efficiency of interior structure that enables to have compact and simple exterior design.
- Customization for structure and function according to the user's needs.

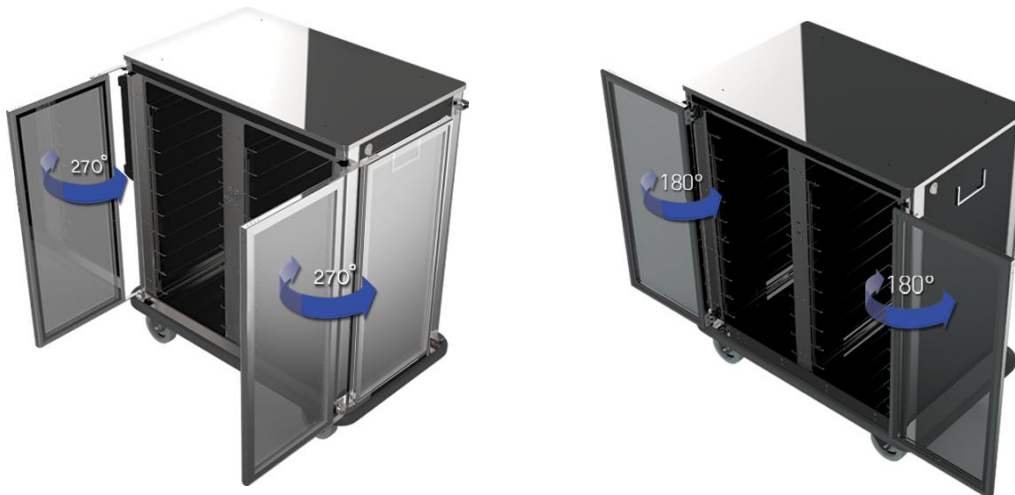


- Temperatures on different chambers can be set differently. Turning off a chamber's temperature control helps to minimize energy consumption.





- Customizing the tray according to the client's needs and changing exterior and specification, accordingly.
- 180 degrees-open type double door convenient for tray distribution.
- Highly efficient two-way tray insertion and pass-type structure.
- All doors have magnetic antibacterial rubber packing installed to prevent the air from being leaked and to inhibit the spread of bacteria.
- Simple structure for convenient and easy cleaning.
- Four rounded shock-absorbing bumpers will protect the whole body of the cart.



# Happy Cart Slim Specifications



Tray

- Model: HA-T390
- Size: 390\*300mm

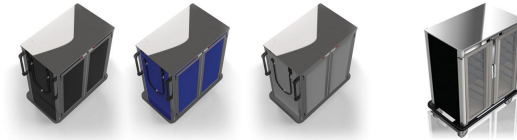


Tray

- Model: HA-T530
- Size: 530\*324mm



Colour options: Ebony black/ Medium blue/ Silver/ Transparent



Model	L	W	H	No. of Trays	No. of Chambers	Weight (kg)	Power Consumption (kw)	Power Supply
HA-SL-H60	1740	740	1410	60 (T390)	6	240	2.9	AC 1P 220V + E 50/60Hz
HA-SL-H54	1740	740	1310	54 (T390)	6	220		
HA-SL-H48	1225	740	1610	48 (T390)	4	180	2.0	
HA-SL-H44	1505	800	1510	44 (T530)	4	160	1.8	
HA-SL-H40	1505	800	1410	40 (T530)	4	140		
HA-SL-H36	1505	800	1310	36 (T530)	4	120	1.8	
HA-SL-H20	1040	800	1410	20 (T530)	2	90		
HA-SL-H18	1040	800	1310	18 (T530)	2	80		

\*Exterior size and specification can be changed for product improvement.

